



SENSAP™

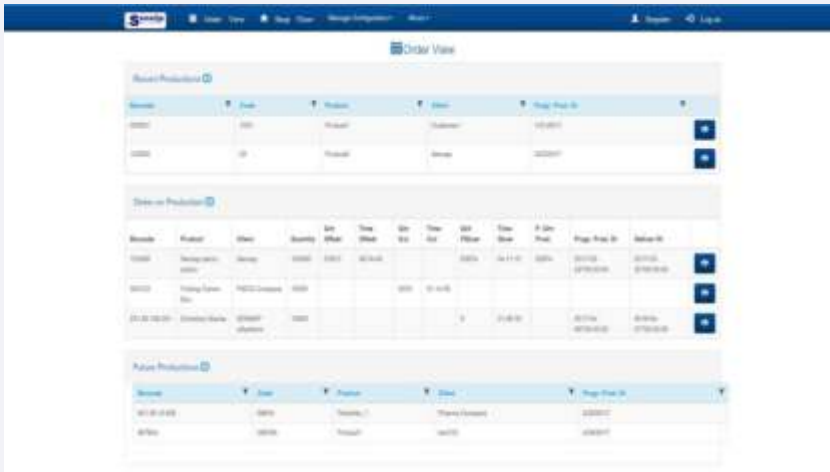
EDGE server

monitoring your production

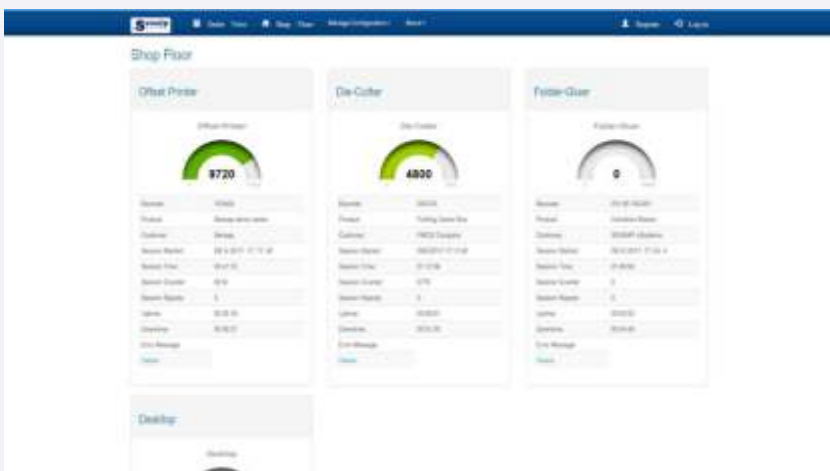
Product Overview

SENSAP™ EDGE server is an innovative software that uses Internet of Things (IoT) technology to allow enterprises to boost productivity, maximize performance, and increase cost estimation accuracy.

SENSAP™ EDGE server shows an active job list, where pre-production estimations and actual, real-time production data are presented. On the same screen, lists of both recently executed and future production runs are presented, thus offering a complete general view of workflows.



In addition, **SENSAP™ EDGE** server provides overall visualization of the shop-floor, by listing all production machines on one screen. This way, shop floor managers can be aware of each machine's status, as well as the progress of the job in production.



Production data are automatically collected, through a network of interconnected **SENSAP™ INTEGRA** devices, and stored on a central database. From there, they are easily available for future viewing and processing through Excel file export.

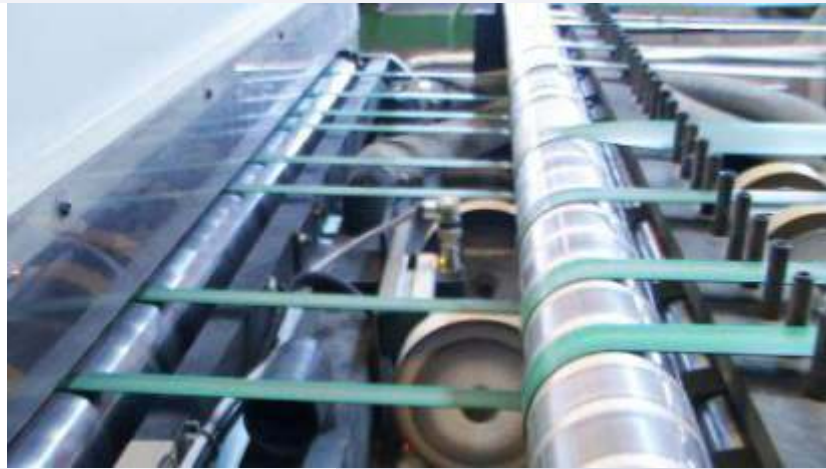
sensing your business

Key Benefits

- **Production visualization**
- **Direct workflow monitoring**
- **Active, recent, and future production listing**
- **Complete Machine and Job depiction**
- **Excel file export allows easy data processing**
- **Allows optimization of cost estimation and KPI calculations, by providing all necessary production data from one source**
- **Enables companies to identify root causes of production problems**
- **Can be interconnected with ERP systems**

integra **DAQ**

sensing your production



Product Overview

SENSAP™ INTEGRA DAQ automation unit focuses on monitoring production rate, number of units produced, and machine usage. Through the management of sensors that are integrated into production machines, **SENSAP™ INTEGRA DAQ** automatically collects production data in real time and provides operators with accurate information about machine usage and the progress of work at hand.

SENSAP™ INTEGRA DAQ eliminates the need for inaccurate, erroneous and time-consuming manual data entry on paper, touchscreens, or mobile terminals. It handles the sum of the logging process thus allowing operators to focus on their work.



SENSAP™ INTEGRA DAQ offers work visualization through its integrated display, presenting well-structured information as well as speed and production rate dashboards, thus being a valuable aide to operators and supervisors.

Combined with **SENSAP™ EDGE** server, it creates a complete and automated production monitoring platform, that also allows storing and exporting production data for further processing, i.e. to calculate machine and process KPIs, and compare actual production data against pre-production cost estimation.

Key Benefits

- **Automatic production data collection, including speed and number of units produced**
- **Visualization of production phase through integrated display**
- **Uses innovative Internet of Things (IoT) technology**
- **Provides basic calculations such as time to completion and uptime/downtime**
- **Offers data export in Excel files**
- **Easy installation in almost any production machine**
- **Short installation & training times**
- **Can be combined with SENSAP™ EDGE server to form a complete monitoring platform**